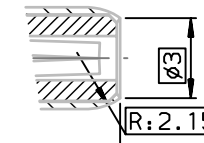


ACTIVE ZONE



ELECTRICAL CHARACTERISTICS

- Impedance: 500HMS
- Working frequency: 1GHz max
- Dielectric with standing voltage: 600V
- Insulation resistance 5000: 14 OHMS
- Contact resistance ≤ 5 m OHMS
- Insertion lost: ≤ 0.2 dB

MECHANICAL CHARACTERISTICS

- Mating force per set of contact 0.4 N to 9 N
- Mating endurance 500
- Temperature -55° to +125 °C

TOOLING

- Coaxial contact extraction tool 8630-07A

DM537415004NCLF	COAXIAL CONTACT MALE ANGLE	3.15	4	5.09	5.95	RG 58 CU KX 15
DM537415001NCLF	COAXIAL CONTACT MALE ANGLE	1.70	2.46	3	3.84	RG 179 BU RG 316 BU KX22A
PART NUMBER	Designation	$\phi A$ <sup>+0.10</sup> <sub>0</sub>	$\phi B$ <sup>±0.05</sup>	$\phi C$ <sup>±0.20</sup>	$\phi D$ <sup>±0.15</sup>	Ref Wire

European Views

NOTE:RoHS INFORMATIONS

- The "LF" product meets European union Directives and other country regulations as described in GS-22-008.
- The product is not intended to be exposed to a manufacturing solder process.
- Packaging spec: see GS-14-920.

rev	ecn no	dr	date
A	LS05-0086	MPE	2005/10/14
B	LS05-0107	MPE	2005/12/20
C	LS07-0001	LGO	2007/01/09
-	-	-	-
-	-	-	-
-	-	-	-

www.fciconnect.com		surface ISO 1302 ✓	tolerance std ISO 406 ISO 1101	projection mm	TOLERANCES UNLESS OTHERWISE SPECIFIED		size A3	Scale 5
Dr	PESSON	2005/10/14	ANGULAR	LINEAR	0.X	±0.1	ECN	LS07-0001
Eng	PESSON	2005/10/14	0.XX	±0.1	0.XXX	±0.1	Spec ref	-
Chr	LEGARE	2005/10/14	0.XX' ±2'	Product family		D-SUB		
Appr	LEGARE	2005/10/14	Product family		D-SUB			
FCI		COAXIAL CONTACT MALE ANGLED			title Solder type		dwg no C01-8639-2156	
catalog no		-		CUSTOMER		sheet 1 of 1		