

Serica 2.4GHz Antenna

Part No. SR4W035

lamiiANT[®]

Product Specification

1. Features

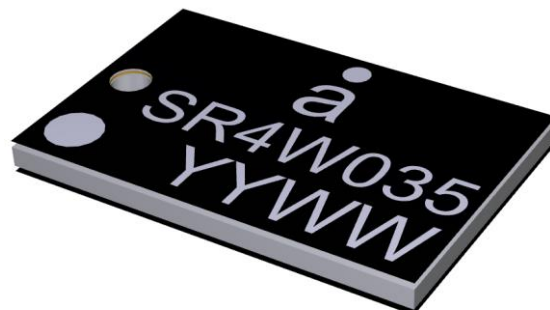
- Antenna for 2.4GHz applications
- Bluetooth, Wi-Fi, ZigBee, ISM.
- Maintains high performance on device: DFI (Designed for Integration)
- Ultra-low profile innovative design.
- SMD mounting
- Supplied on Tape and Reel
- Automotive temperature rating.

2. Description

Serica is intended for use with 2.4GHz applications. The antenna only requires a small ground plane. It is ideal for single and MIMO antenna systems. This product specification shows the performance of the antenna over the frequency range 2.4 – 2.5GHz.

3. Applications

- Wearable devices
- Medical equipment
- Tablets
- Network Devices
- MIMO Systems
- IP Cameras
- Access Points



4. Part Number

Serica: SR4W035



5. General Data

| | |
|------------------------------|----------------------------------|
| Product name | Serica |
| Part Number | SR4W035 |
| Frequency | 2.4 – 2.5 (GHz) |
| Polarization | Linear |
| Operating temperature | -40°C to 140°C |
| Environmental Condition Test | ISO16750-4 5.1.1.1/5.1.2.1/5.3.2 |
| Impedance with matching | 50 Ω |
| Weight | <1g |
| Antenna type | SMD |
| Dimensions | 6.0 x 4.0 x 0.4 (mm) |

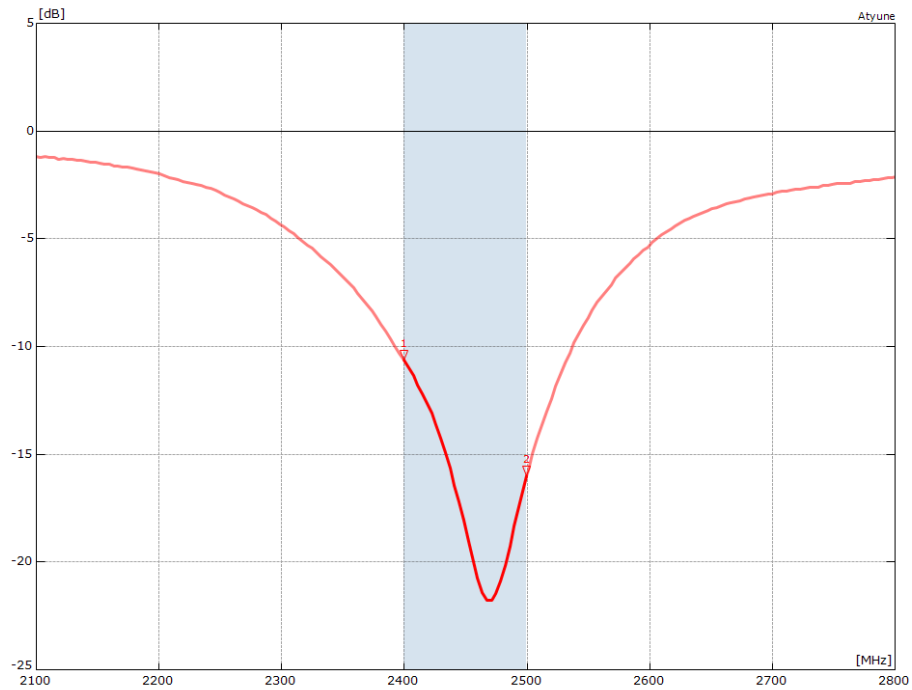
6. RF Characteristics

| | 2400 - 2500 MHz | Conditions |
|-----------------------|-----------------|--|
| Peak gain | 3.50dBi | All data measured on Antenna's evaluation PCB Part No. SR4W035-EVB-1 |
| Average gain (Linear) | -1.50dBi | |
| Average efficiency | >65% | |
| Maximum return loss | -10.0dB | |
| Maximum VSWR | 1.85:1 | |

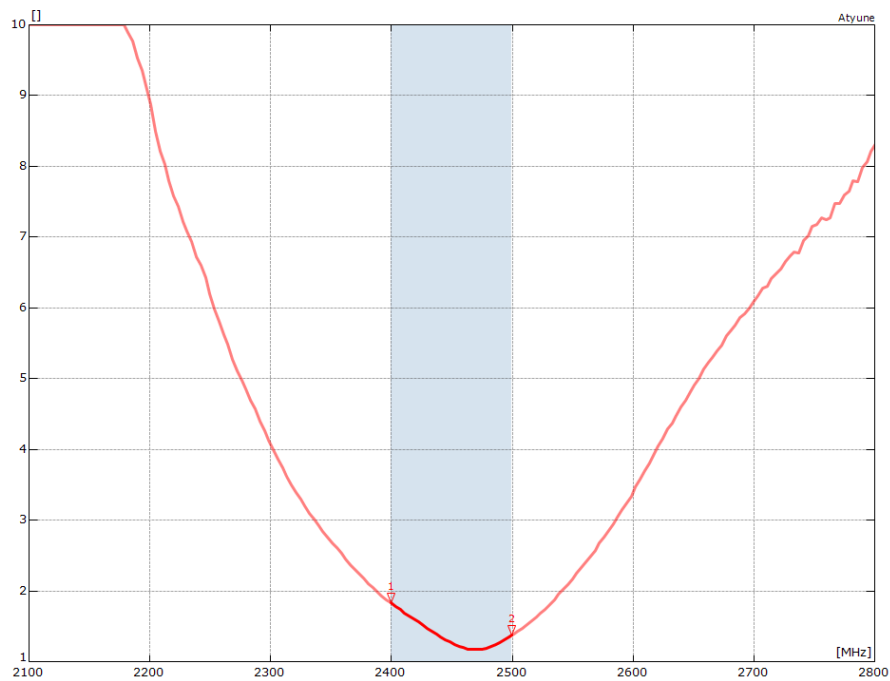
Antennas for Wireless M2M Applications

7. RF Performance

7.1 Return Loss

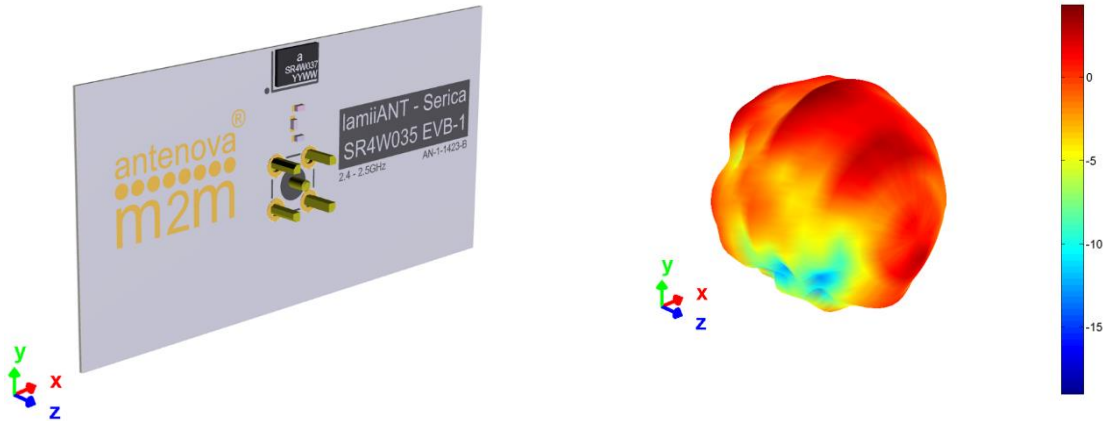


7.2 VSWR



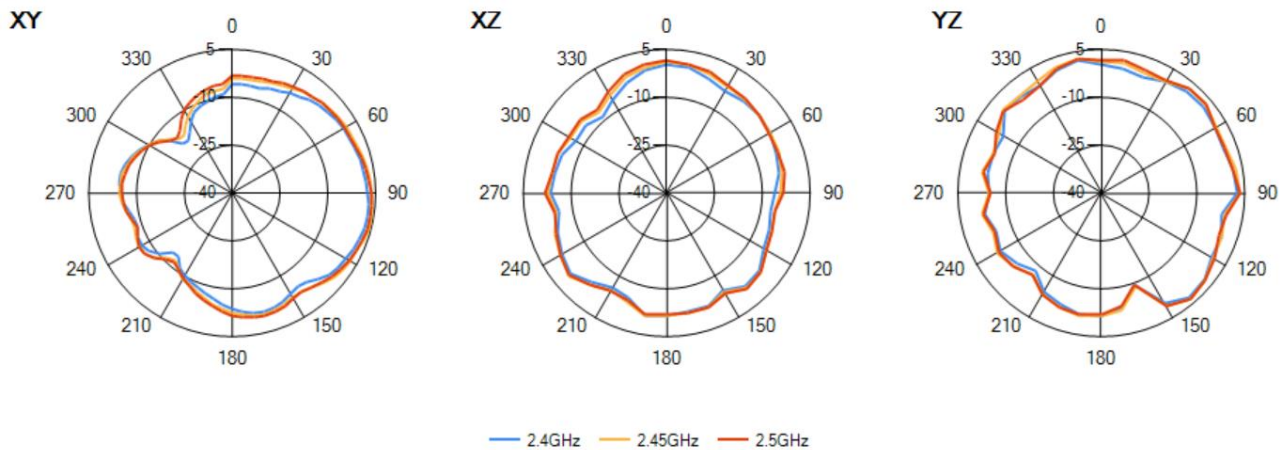
7.3 Antenna pattern

2400 MHz – 2500 MHz

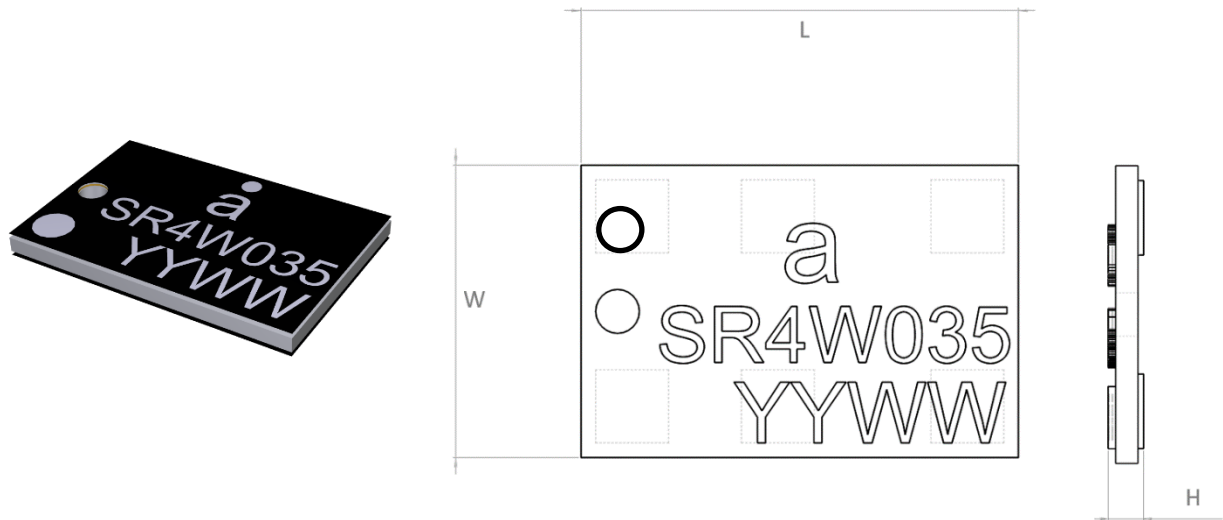


3D pattern at 2.45 GHz

Drag to rotate pattern and PCB by using Adobe Reader
(Click to Activate)



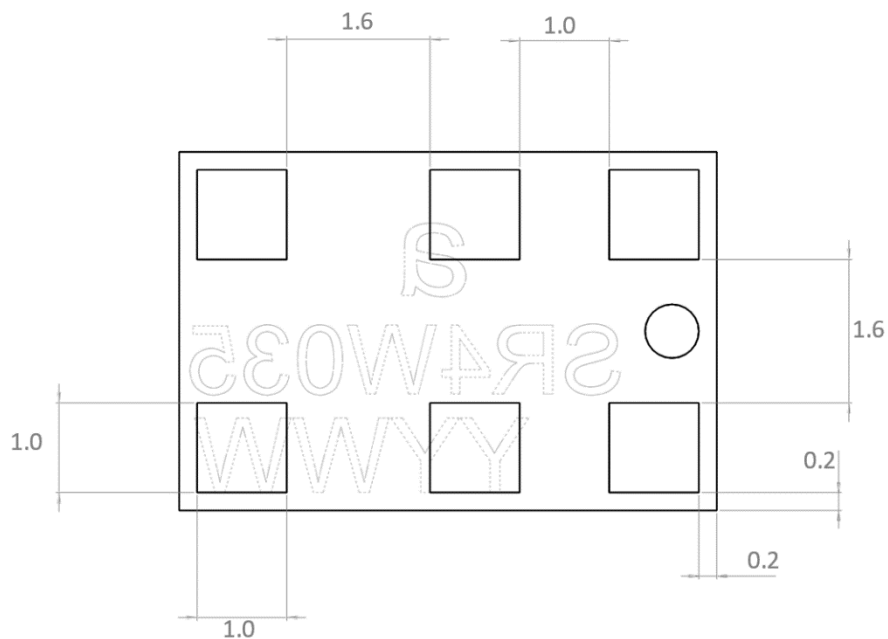
8. Antenna Dimensions



| L | W | H |
|----------|----------|---------------|
| Length | Width | Height |
| 6.0 ±0.1 | 4.0 ±0.1 | 0.4 +0.1 -0.0 |

All Dimensions in (mm)

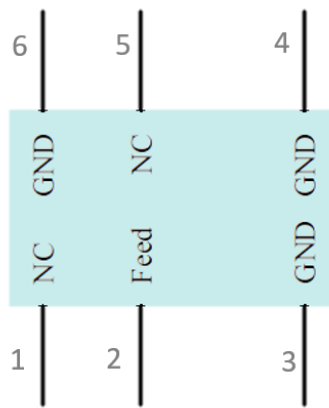
Bottom Side Dimensions



10.0 Schematic symbol and Pin definition

The circuit symbol for the antenna is shown below. The antenna has 6 pins with only two as functional. All other pins are for mechanical strength.

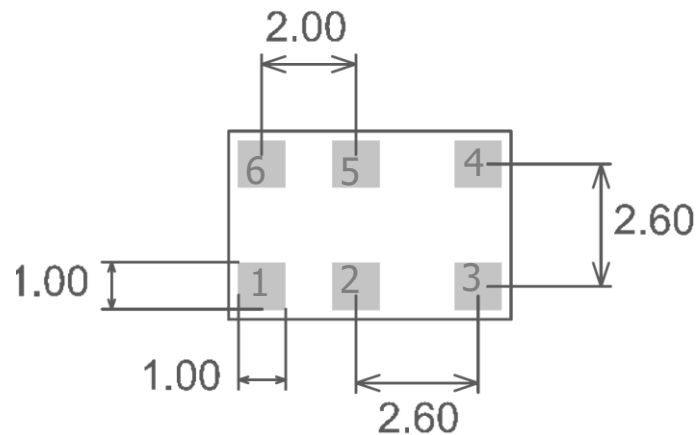
| Pin | Description |
|-------|----------------------------|
| 2 | Feed |
| 3,4,6 | Return/GND |
| 1,5 | Not used (Mechanical only) |



Serica Schematic Symbol

9.0 Antenna footprint

The recommended host PCB footprint is below.



6 copper pads all 1.0 x 1.0 (mm)

11. Electrical Interface

11.1 Transmission Line

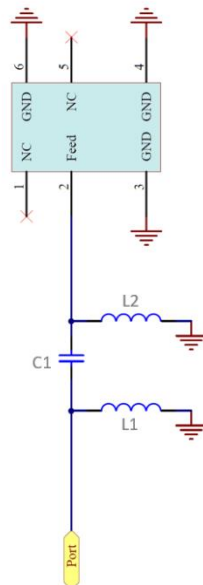
All transmission lines should be designed to have a characteristic impedance of 50Ω.

- The length of the transmission lines should be kept to a minimum.
- Any other parts of the RF system like transceivers, power amplifiers, etc, should also be designed to have an impedance of 50 Ω.

Once the material for the PCB has been chosen (PCB thickness and dielectric constant), a coplanar transmission line can easily be designed using any of the commercial software packages for transmission line design. For the chosen PCB thickness, copper thickness and substrate dielectric constant, the program will calculate the appropriate transmission line width and gaps on either side of the track, so the characteristic impedance of the co-planar transmission is 50 Ω.

11.2 Matching Circuit

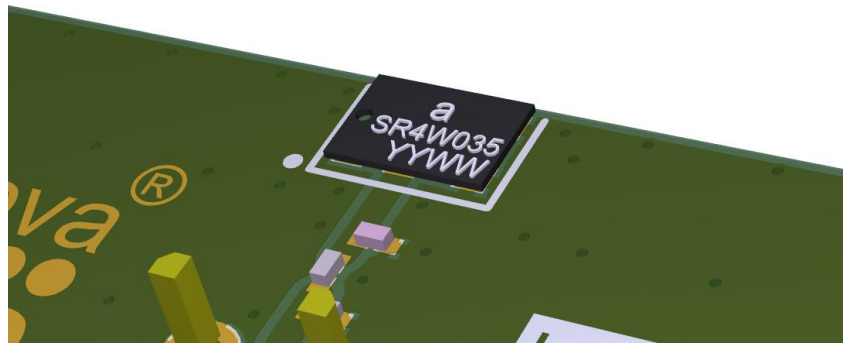
The antenna requires a matching circuit that must be optimized for each product. The matching circuit will require up to five components and the following circuit should be designed into the host PCB. Not all components may be required but should be included as a precaution. The matching network must be placed close to the antenna feed to ensure it is more effective in tuning the antenna.



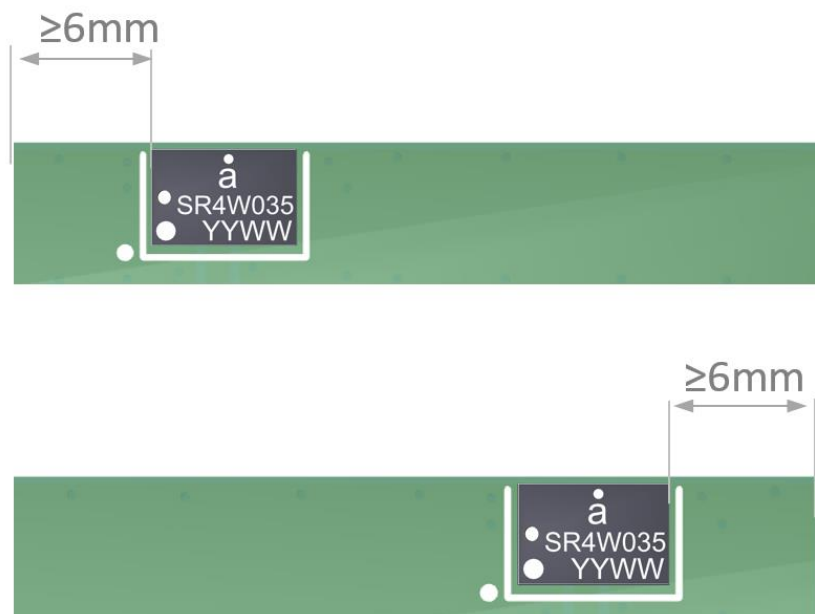
12.0 Antenna Integration Guide

12.1 Antenna Placement

Whichever size host PCB is used, the antenna should ideally be placed on the host PCB's longest edge at the centre.



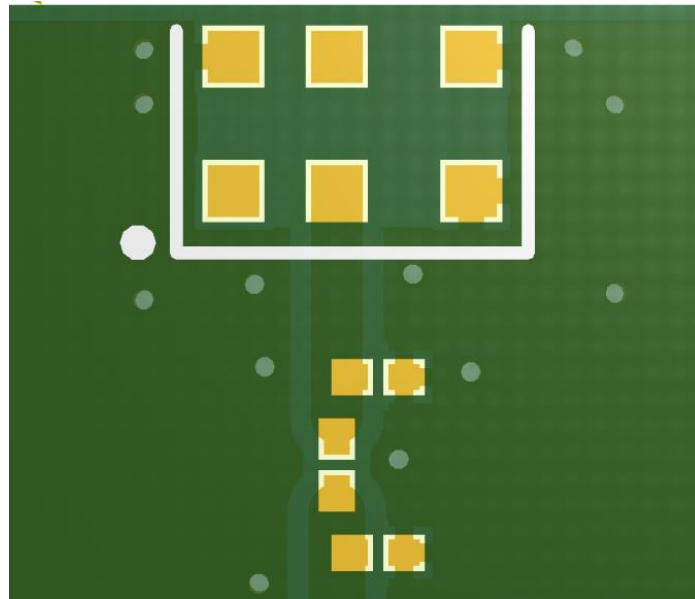
Where the centre is not a viable option, the antenna can be placed offset on the PCB to within the limits shown below. A minimum of 6mm from either PCB edge should be observed. Where possible this distance should be greater than 6mm.



12.2 Host PCB Layout

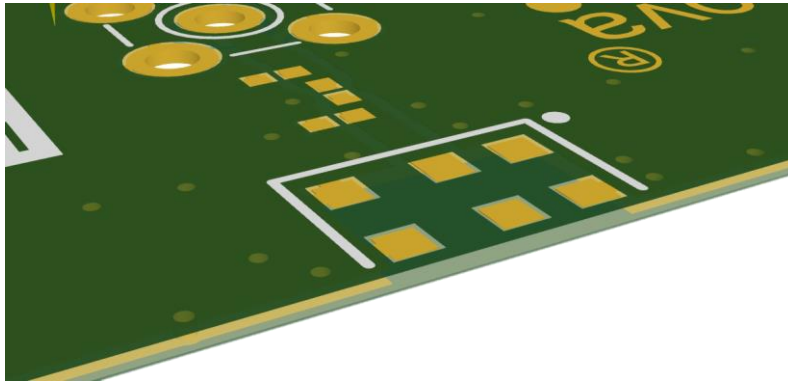
The footprint and clearance of the host PCB must meet the antenna specification. An example of the PCB layout, below, shows the antenna footprint with clearance. Pins 3, 4 and 6 (GND) are shown directly connecting to the GND with the shortest route. The feed (Pin 2) connects to the matching circuit close to the antenna.

Example host layout

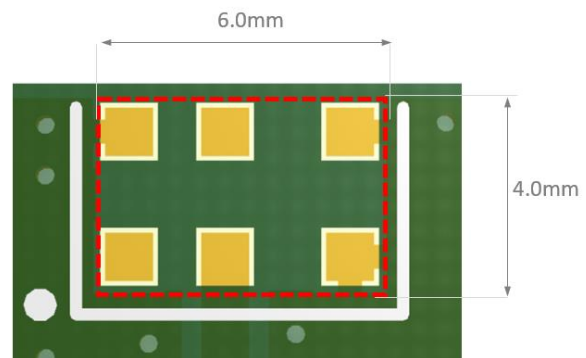
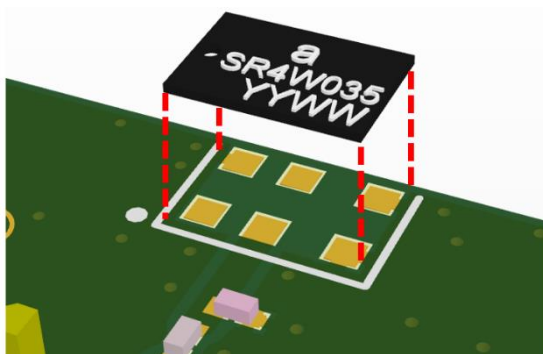


12.3 Host PCB Clearance

The diagram below shows the antenna footprint and clearance through all layers on the PCB. Only the antenna pads and connections to feed and GND are present within this clearance area. The clearance area required is 6.0 x 4.0 (mm).



The clear-out area is simply defined as the same size as the antenna. No additional clearance is required.



----- Clearance area

14.0 Reference Board

The reference board has been designed for the purpose of evaluating SR4W035 and includes an SMA female connector.

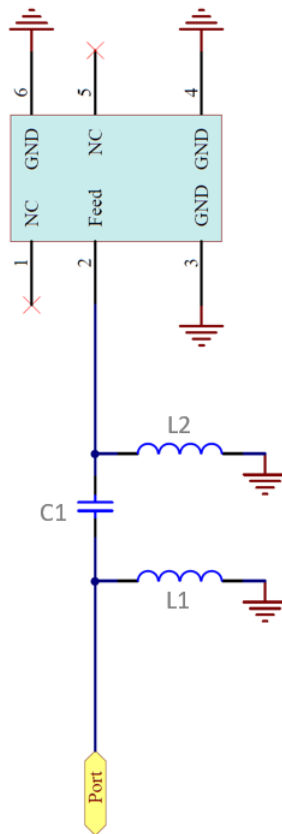
SR4W035-EVB-1 Evaluation Board



To order a reference board contact sales@antenna-m2m.com.
Please state if a single antenna or two antenna EVB is required.

14.1 Reference Board Matching Circuit

The reference board has been designed for the purposes of evaluating SR4W035 and includes an SMA female connector.



| Designator | Type | Value | Description |
|------------|------------|------------|-------------------------------------|
| L1 | Not Fitted | Not Fitted | Not Fitted |
| L2 | Inductor | 2.2nH | Murata LQG15HN series or equivalent |
| C1 | Capacitor | 1.5pF | Murata GRM15HS series or equivalent |

15. Soldering

This antenna is suitable for lead free soldering. The reflow profile should be adjusted to suit the device, oven and solder paste, while observing the following conditions:

- The maximum temperature should not exceed 240 °C.
- However for lead free soldering, a maximum temperature of 255 °C for no more than 20 seconds is permitted.
- The antenna should not be exposed to temperatures exceeding 120 °C more than 3 times during the soldering process.

16. Hazardous Material Regulation Conformance

The antenna has been tested to conform to RoHS requirements. A certificate of conformance is available from Antenova M2M's website.

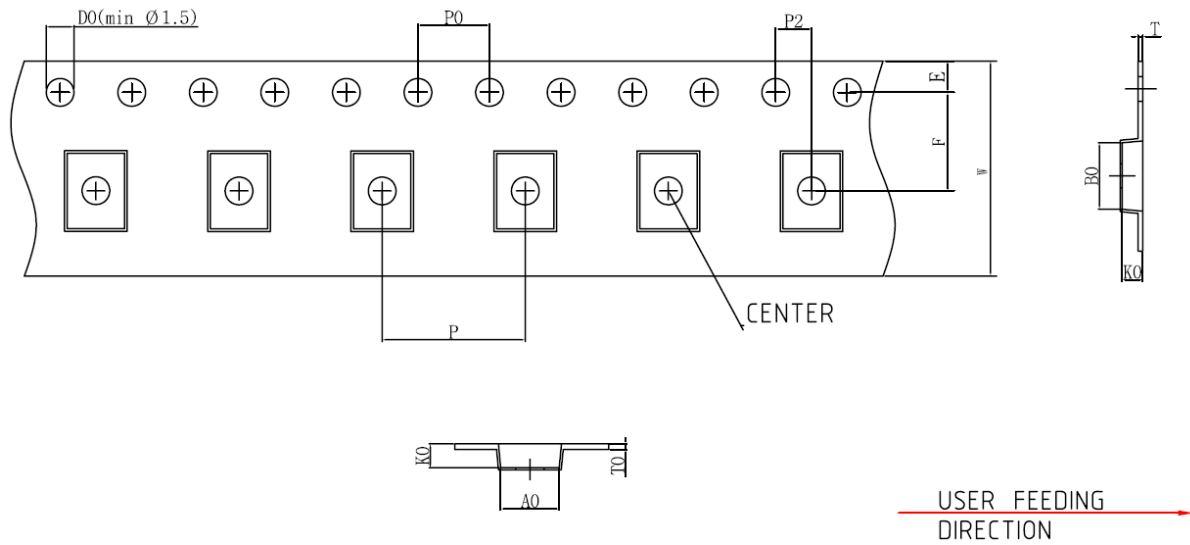
17. Packaging

17.1 Optimal Storage Conditions

| | |
|---------------|---|
| Temperature | -10°C to 40°C |
| Humidity | Less than 75% RH |
| Shelf life | 24 Months |
| Storage place | Away from corrosive gas and direct sunlight |
| Packaging | Reels should be stored in unopened sealed manufacturer's plastic packaging. |

Note: Storage of open reels of antennas is not recommended due to possible oxidization of pads on antennas. If short term storage is necessary, then it is highly recommended that the bag containing the antenna reel is re-sealed and stored in like storage conditions as in above table.

17.2 Tape Characteristics



| Ko | Ao | Bo | P0 | P1 | P2 |
|------------|------------|------------|------------|------------|------------|
| 0.95 ± 0.1 | 4.20 ± 0.1 | 6.20 ± 0.1 | 4.00 ± 0.1 | 8.00 ± 0.1 | 2.00 ± 0.1 |

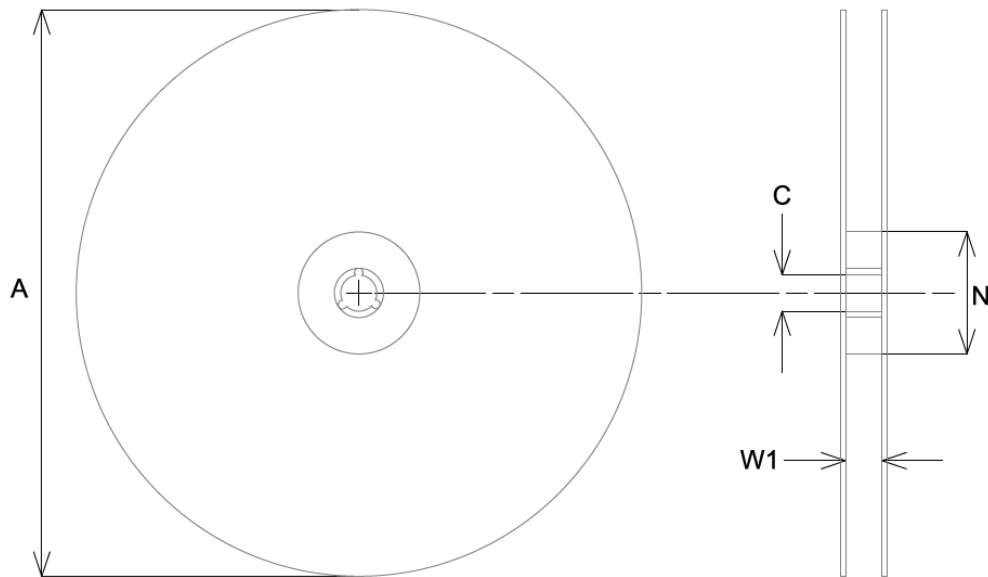
| E | F | W |
|------------|-------------|-------------|
| 1.75 ± 0.1 | 7.50 ± 0.15 | 12.00 ± 0.3 |

Dimensions in mm

Notes:

- 1) 10 sprocket hole pitch cumulative tolerance ±0.2
- 2) Camber not to exceed 1mm in 100mm
- 3) Ao and Bo measured on a plane 0.1mm above the bottom of the pocket
- 4) Ko measured from a plane on the inside bottom of the pocket to the top surface of the carrier

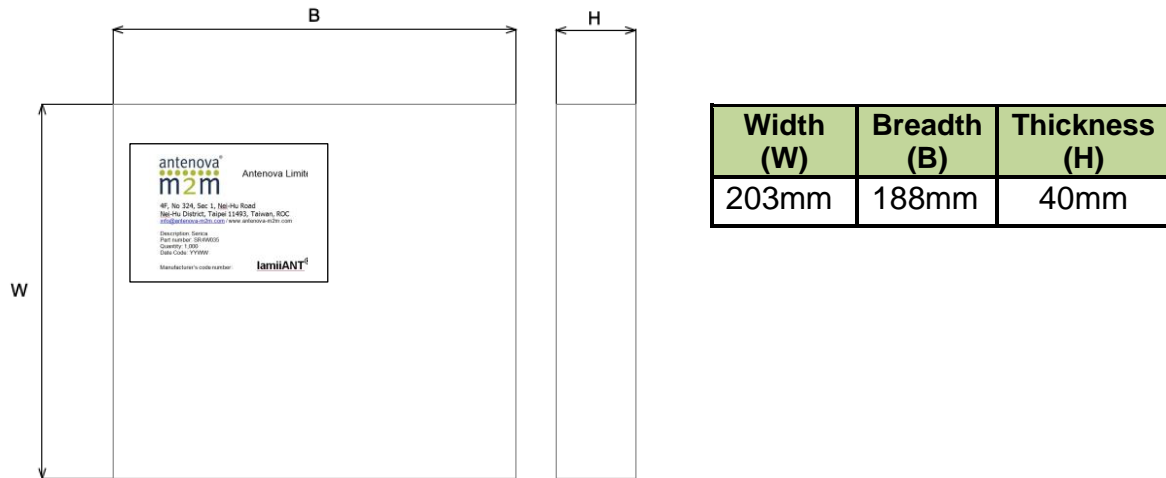
17.3 Reel Dimensions



| A | C | N | W1 |
|-------------|-------------|------------|------------|
| 178.0 ± 2.0 | 13.50 ± 0.5 | 60.0 ± 0.2 | 13.0 ± 0.3 |

All dimensions in mm

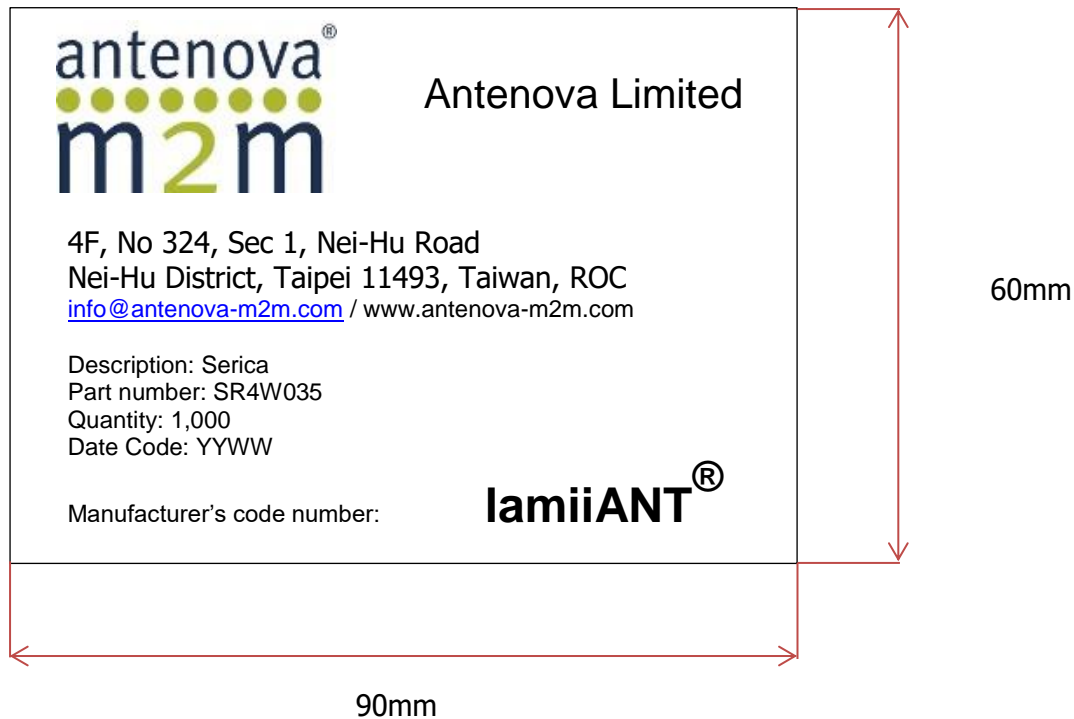
17.4 Box Dimensions



17.5 Bag Properties

Reels are supplied in protective plastic packaging.

17.6 Reel Label Information





www.antenova-m2m.com

Corporate Headquarters

Antenova Limited
2nd Floor Titan Court
3 Bishop Square
Hatfield
AL10 9NA
UK

Tel: +44 1223 810600

Email: sales@antenova-m2m.com

North America Headquarters

Antenova Limited
100 Brush Creek Road
Suite 103, Santa Rosa
California 95404,
USA

Tel: +1 707 890 5202

Email: sales@antenova-m2m.com

Asia Headquarters

Antenova Asia Limited
4F, No. 324, Sec. 1, Nei-Hu Road
Nei-Hu District
Taipei 11493
Taiwan, ROC

Tel: +886 (0) 2 8797 8630

Fax: +886 (0) 2 8797 6890

Email: sales@antenova-m2m.com

Copyright© Antenova Ltd. All Rights Reserved. Antenova®, Antenova M2M®, gigaNOVA®, the Antenova product family names, and the Antenova and Antenova M2M logos are trademarks and/or registered trademarks of Antenova Ltd. Any other names and/or trademarks belong to their respective companies.

The materials provided herein are believed to be reliable and correct at the time of printing. Antenova does not warrant the accuracy or completeness of the information, text, graphics or other items contained within this information. Antenova further assumes no responsibility for the use of this information, and all such information shall be entirely at the user's risk.



Certificate No: 4598

Antennas for Wireless M2M Applications