



Edgeport[®]

USB Expansion Modules-Industrial

Installation Guide

Revision history—90000409

Revision	Date	Description
G	March, 2009	No changes to the document.
H	April, 2009	Added RoHS compliance information for China.
J	June, 2009	Updated the product CD.
K	December, 2017	Updated branding and made editorial enhancements.

Trademarks and copyright

Digi, Digi International, and the Digi logo are trademarks or registered trademarks in the United States and other countries worldwide. All other trademarks mentioned in this document are the property of their respective owners.

© 2017 Digi International Inc. All rights reserved.

Disclaimers

Information in this document is subject to change without notice and does not represent a commitment on the part of Digi International. Digi provides this document “as is,” without warranty of any kind, expressed or implied, including, but not limited to, the implied warranties of fitness or merchantability for a particular purpose. Digi may make improvements and/or changes in this manual or in the product(s) and/or the program(s) described in this manual at any time.

Warranty

To view product warranty information, go to the following website:

www.digi.com/howtobuy/terms

Send comments

Documentation feedback: To provide feedback on this document, send your comments to techcomm@digi.com.

Customer support

Digi Technical Support: Digi offers multiple technical support plans and service packages to help our customers get the most out of their Digi product. For information on Technical Support plans and pricing, contact us at +1 952.912.3444 or visit us at www.digi.com/support.

Contents

USB Expansion Modules-Industrial

Edgeport/1i

Cabling Edgeport	6
USB connection	6
RS-422/485 serial connection	6
Jumper wire based mode configuration	7

Edgeport/2i

Cabling Edgeport	8
USB connection	8
RS-422/RS-485 serial connection	8
Cable connections (DB9 female) for full duplex	8
Cable connections (DB9 female) for half duplex	9
Configuring the DIP switches	9
Two-position switch	9
Eight-position switch	9

Edgeport/2s MEI, Edgeport/4s MEI, Edgeport/4s Isolated, Edgeport/8s MEI

Cabling Edgeport	11
USB connection	11
Cable connections (DB9 female) for full duplex	11
Cable connections (DB9 Female) for half duplex	12
DB9 RS-232 pin assignment	12
Configuring the port flags	13

Edgeport mounting diagrams

For all Edgeports except the Edgeport/1i	14
--	----

Edgeport driver installation

Edgeport configuration utility

General tab	16
Information tab	17
Configuration tab	18
Port Flag Configuration tab	19
Confidence Test tab	22
Power Management tab	23
Port Status tab	24
Version tab	25
Advanced tab	26

Edgeport system status light

For all Edgeports except the Edgeport/1i	28
--	----

Understanding hubs

Regulatory information

USB Expansion Modules-Industrial



This manual covers the following models:

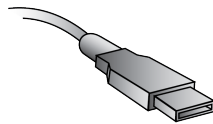
- Edgeport/1i
- Edgeport/2i
- Edgeport/2s MEI
- Edgeport/4s MEI
- Edgeport/4s DC Isolated
- Edgeport/8s MEI

Edgeport/1i

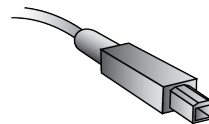
Edgeport® USB-to-Serial Converters from Digi International provide high-speed serial connectivity via USB port expansion for Windows-based applications. Edgeport/1i provides one RS-422/485 serial DB-9 port. For more detailed information, as well as the latest manual and technical updates, visit www.digi.com/support/Edgeport.

Cabling Edgeport

USB connection



Type A





Type B

Plug the Type A (flat) end of the USB cable into the USB port located in the back of your PC or into an available USB port on a standard hub or into a Digi International Hubport. Plug the Type B (square) end of the USB cable into the Edgeport.

RS-422/485 serial connection

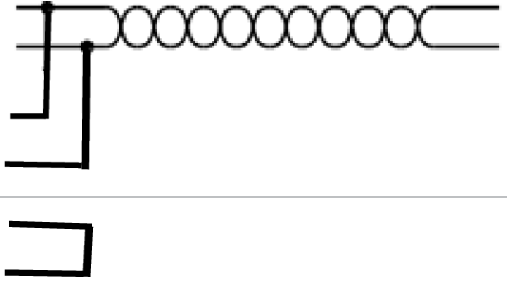
The Edgeport/1i supports RS-422/RS-485 protocol. To configure the features of RS-422/485 communication on the Edgeport/1i, you will short or leave certain pins unconnected at the DB9 connector of the cable. See the following pin assignment tables:

Cable connections (DB9 female) for full duplex

Pin	Signal	Description	
3 ▶ TA 7 ▶ TB	(T-) (T+)	transmit data negative transmit data positive	
8 ▶ RA 4 ▶ RB	(R-) (R+)	receive data negative receive data positive	

Pin	Signal	Description	
5 ▶		signal ground	
2 ▶		no connect	

Cable connections (DB9 female) for half duplex

Pin	Signal	Description	
3 ▶ TA 7 ▶ TB	(T-) (T+)	transmit data negative transmit data positive	
8 ▶ RA 4 ▶ RB	(R-) (R+)	receive data negative receive data positive	
5 ▶ 1 ▶		signal ground full and half duplex	
2		no connect	

Note Short pin 1 to pin 5 (GND).

Jumper wire based mode configuration

For "jumper wire" based mode configuration, use the following pins:

Pin	Description
1 ▶	full and half duplex
6 ▶	echo on and off
9 ▶	line termination

The user can switch on and off the following features:

- **Line termination (120 ohm):** To enable the line termination resistor, connect pin 9 to pin 8. To disable line termination, leave pin 9 unconnected.
- **Full Duplex and Half Duplex:** For Full Duplex operation, leave pin 1 unconnected. For Half Duplex operation, short pin 1 to pin 5 (GND) at the cable connector.
- **Echo On and Echo Off:** For Echo On mode, leave pin 6 unconnected. For Echo Off mode, short pin 6 to pin 5 (GND) at the cable connector.

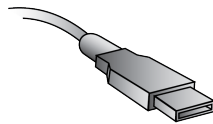
If the drivers are not already installed, see [Edgeport driver installation](#).

Edgeport/2i

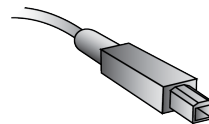
Edgeport USB-to-Serial Converters from Digi International provide high-speed serial connectivity via USB port expansion for Windows-based applications. Edgeport/2i provides a combination of up to two RS-422 and/or RS-485 serial DB-9 ports. For more detailed information, as well as the latest manual and technical updates, visit www.digi.com/support/Edgeport.

Cabling Edgeport

USB connection



Type A





Type B

Plug the Type A (flat) end of the USB cable into the USB port located in the back of your PC or into an available USB port on a standard hub or into a Digi International Hubport. Plug the Type B (square) end of the USB cable into the Edgeport.

RS-422/RS-485 serial connection

Cable connections (DB9 female) for full duplex

Pin	Signal	Description	
3 ▶ TA 7 ▶ TB	(T-) (T+)	transmit data negative transmit data positive	
8 ▶ RA 4 ▶ RB	(R-) (R+)	receive data negative receive data positive	
5 ▶		signal ground	
1, 2, 6, 9		no connect	

Note For full duplex (in the above diagram) the differential pair TA and TB should be together in one twisted pair and RA and RB should be together in another twisted pair.

Cable connections (DB9 female) for half duplex

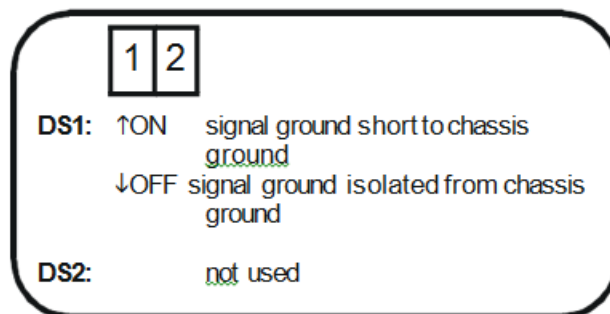
Pin	Signal	Description	
3 ▶ TA 7 ▶ TB	(T-) (T+)	transmit data negative transmit data positive	
8 ▶ RA 4 ▶ RB	(R-) (R+)	receive data negative receive data positive	
5 ▶		signal ground	
1, 2, 6, 9		no connect	

Note Half duplex contains only one twisted pair.

Configuring the DIP switches

Two-position switch

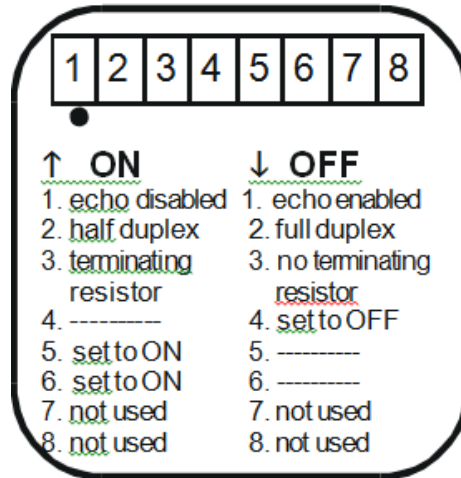
The two-position DIP switch, located on the back panel, connects the signal ground to chassis ground. **IMPORTANT:** Do not connect signal ground to chassis ground on more than one location in order to prevent ground loops and potentially high currents.



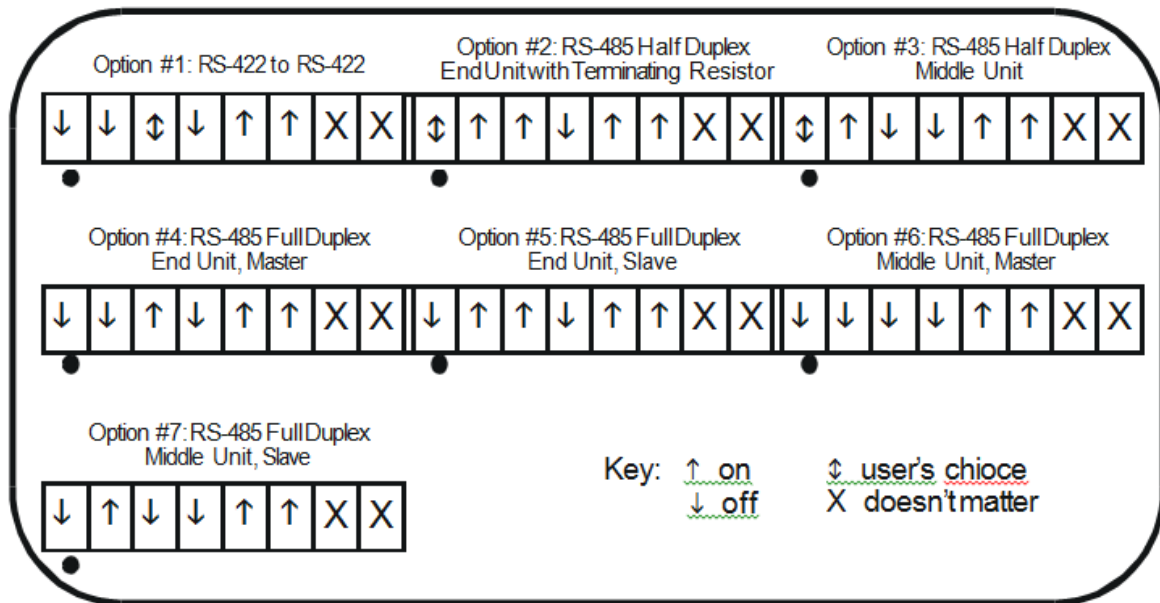
Eight-position switch

The Edgeport/2i also has two sets of eight position DIP switches, located on the back panel next to their corresponding serial port.

The following figure shows what each switch selects in the ON and OFF positions.



Consult the diagrams in the following figure for various configuration options.



If the drivers are not already installed, see [Edgeport driver installation](#).

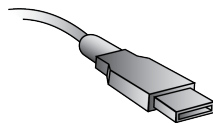
Edgeport/2s MEI, Edgeport/4s MEI, Edgeport/4s Isolated, Edgeport/8s MEI

Edgeport USB-to-Serial Converters from Digi International provide high-speed serial connectivity via USB port expansion for Windows-based applications. Edgeport/2s MEI, Edgeport/4s MEI and Edgeport/8s MEI provide a combination of up to two, four or eight (respectively) RS-232 and/or RS-422 and/or RS-485 serial DB-9 ports. For more detailed information, as well as the latest manual and technical updates, visit www.digi.com/support/Edgeport.

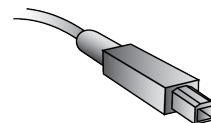
The Isolated version has 2KV DC isolation between all of its ports including the serial ports and the USB port.

Cabling Edgeport

USB connection



Type A



Type B

Plug the Type A (flat) end of the USB cable into the USB port located in the back of your PC or into an available USB port on a standard hub or into a Digi International Hubport. Plug the Type B (square) end of the USB cable into the Edgeport.

Cable connections (DB9 female) for full duplex

Pin	Signal	Description	
3 ▶ TA 7 ▶ TB	(T-) (T+)	transmit data negative transmit data positive	
8 ▶ RA 4 ▶ RB	(R-) (R+)	receive data negative receive data positive	
5 ▶		signal ground	
1, 2, 6, 9		no connect	

Note For full duplex (in the above diagram) the differential pair TA and TB should be together in one twisted pair and RA and RB should be together in another twisted pair.

Cable connections (DB9 Female) for half duplex

Pin	Signal	Description	
3 ▶ TA 7 ▶ TB	(T-) (T+)	transmit data negative transmit data positive	
8 ▶ RA 4 ▶ RB	(R-) (R+)	receive data negative receive data positive	
5 ▶		signal ground	
1, 2, 6, 9		no connect	

Note Half duplex contains only one twisted pair.

DB9 RS-232 pin assignment

Pin	Description
1 ▶ DCD	data carrier detect
2 ▶ RD	receive data
3 ▶ TD	transmit data
4 ▶ DTR	data terminal ready
5 ▶ SGND	ground
6 ▶ DSR	data set ready
7 ▶ RTS	request to send
8 ▶ CTS	clear to send
9 ▶ RI	ring indicator

Configuring the port flags

The Edgeport/2s MEI, Edgeport/4s MEI, Edgeport/8s MEI and the Edgeport/4s Isolated, which support RS-232, RS-422 and RS-485, are configured using the Edgeport configuration utility, available from the Edgeport driver package. Before configuring, make sure that the drivers have been installed and that the device is connected to your computer.

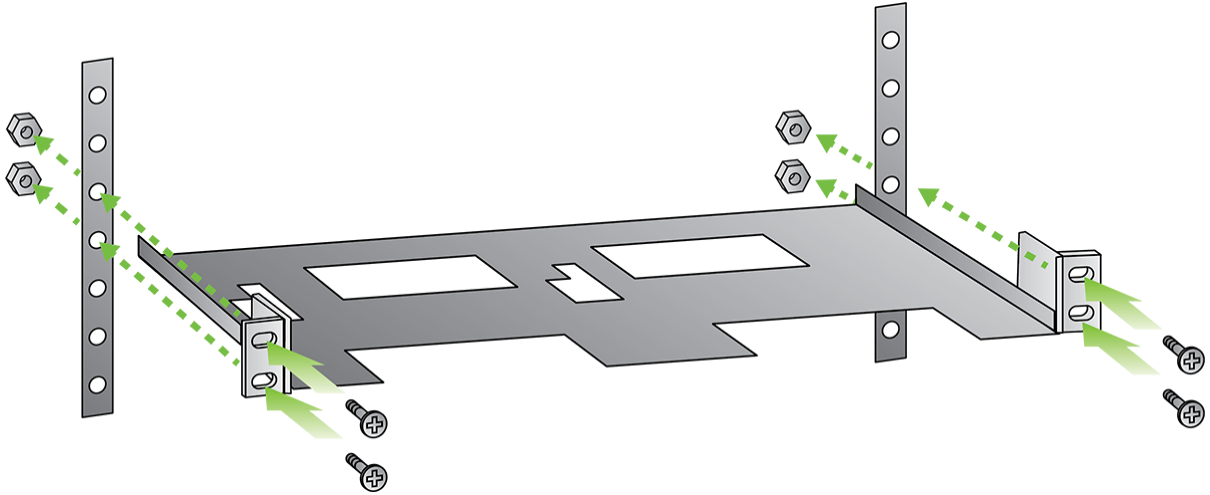
If the drivers are not already installed, see [Edgeport driver installation](#).

Open the Edgeport configuration utility. Select the Edgeport that you want to configure, and click on the Port Flag Configuration button. The drop-down boxes under the **Industrial Settings** allow you to select from the following options for each port listed:

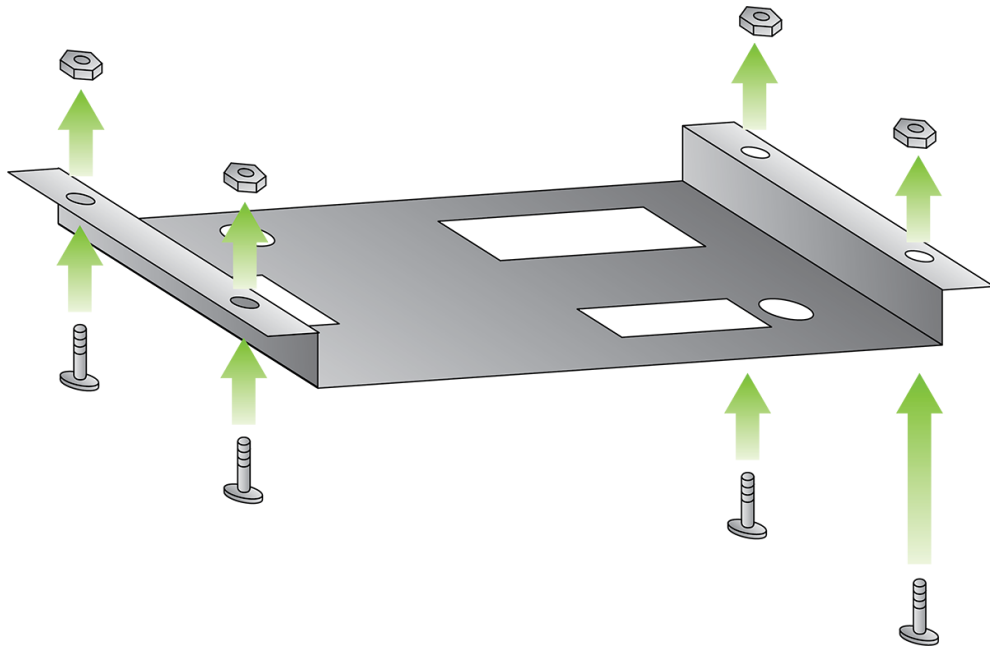
- RS-232
- RS-422: No Terminating Resistor
- RS-422: Terminating Resistor
- RS-485: Half Duplex, End Unit, Echo
- RS-485: Half Duplex, End Unit, No Echo
- RS-485: Half Duplex, Middle Unit, Echo
- RS-485: Half Duplex, Middle Unit, No Echo
- RS-485: Full Duplex, End Unit, Master RS-485: Full Duplex, End Unit, Slave
- RS-485: Full Duplex, Middle Unit, Master
- RS-485: Full Duplex, Middle Unit, Slave

Edgeport mounting diagrams

For all Edgeports except the Edgeport/1i



Rack mount kit¹



Under-shelf mounting bracket¹

¹Nuts, bolts, and screws are not included.

Edgeport driver installation

The following instructions apply to Windows XP, Server 2003 (R2), Server 2008 (R2), Windows 7, Windows 8, Windows Server 2012 (R2), Windows 10 and Windows Server 2016.

Note Please go to www.digi.com to download software for older operating systems.

You must be logged into an account with administrator privileges before proceeding.

1. Make sure the Edgeport device is not connected to the computer.
2. If you have installed a previous Edgeport driver, use the Edgeport configuration utility that came with your driver package to uninstall the driver:
 - a. Click the **Uninstall** button from the **Advanced** tab.
 - b. Reboot the computer when prompted.
3. Download the most current Edgeport drivers from the Digi website:
 - a. Navigate to www.digi.com using a web browser.
 - b. Select **Support Tools** from the **Support** menu.
 - c. Under the **Support Downloads** menu, select **Drivers**.
 - d. Select **Edgeport USB** from the list.
 - e. Select the appropriate Windows Operating System from the dropbox.
 - f. The driver download link will appear underneath the OS dropbox. Save this .exe file somewhere convenient such as your desktop.
4. Install the Edgeport driver:
 - a. Log into Windows with the administrator user account, or another account with administrative privileges.
 - b. Run the downloaded **.exe** file and wait until the installation is complete.
 - c. Connect the Edgeport to the computer with a USB cable. Or, if the Edgeport is already connected to the computer via USB, unplug and plug it in again.
 - d. The Edgeport drivers will automatically install.

Your new COM port(s) are ready and are numbered sequentially following the existing ports in your system. You can now run the Edgeport configuration utility, described in the next section.

Edgeport configuration utility

The following instructions apply to all Windows operating systems.

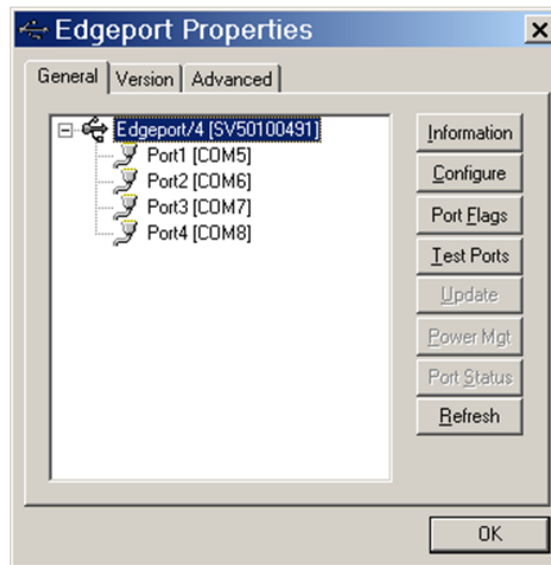
The Edgeport configuration utility program allows you to manage the serial ports of your Edgeport product. The Edgeport configuration utility is available from the computer **Start** menu after you install the Edgeport drivers.

Follow these steps to access the configuration utility:

1. Download the Edgeport drivers, following the instructions in [Edgeport driver installation](#).
2. Once the drivers are installed, launch the Edgeport configuration utility from the Digi USB program group on the computer's **Start** menu.

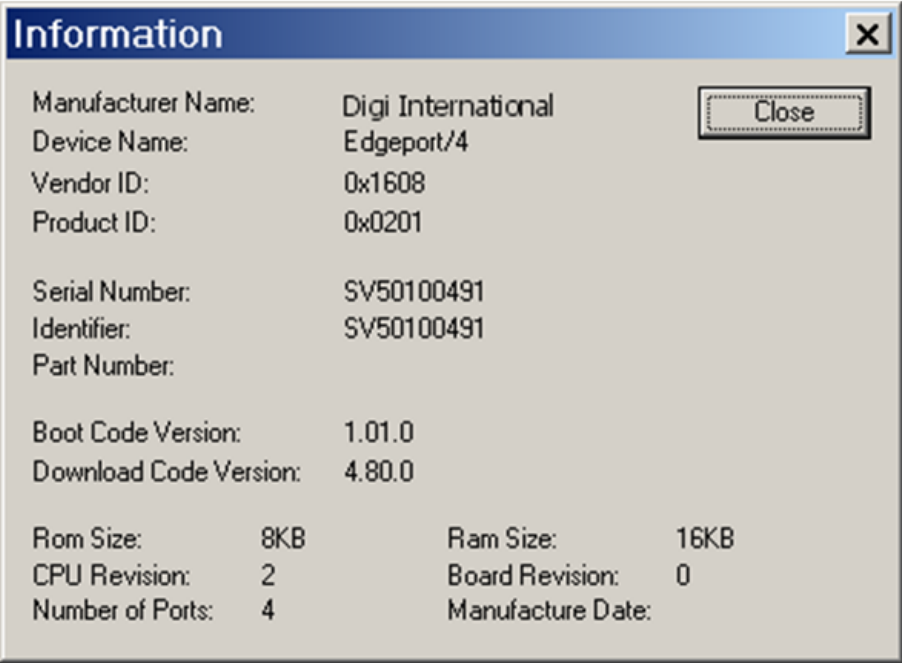
General tab

The **General** tab in this utility allows you to perform tasks such as configuring the device's COM ports, setting port flags and testing the ports. See the subsections that follow for additional details.



Information tab

The **Information** tab allows you to review the manufacturing information pertaining to your device.



Configuration tab

The **Configuration** tab allows you to reassign the physical port on your device to any available Windows COM port number from 1 to 255 and give your device a user friendly device name. This capability is particularly helpful if you have more than one device.

Configuration [X]

In order for the changes to take effect, the device must be unplugged and then plugged back into the USB port.

Device Name:

COM ports based on converter serial number

To assign a new COM number to one of the ports, type the new number in the field next to the port number.

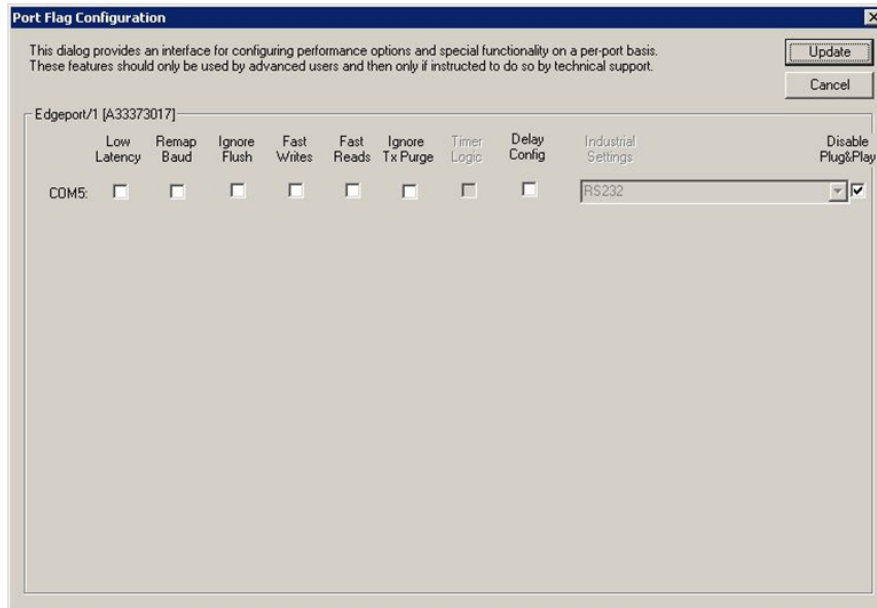
Port 1 Port 2 Port 3 Port 4

[Tell Me More...](#)

OK Cancel

Port Flag Configuration tab

The **Port Flag Configuration** tab allows you to configure performance options and special functionality on a per-port basis.



- **Low Latency** (930-based Edgeport only):

Normally the UART will interrupt when the receiver has been idle for four character times; for example 4ms at 9600). As long as data is being received, UART continues to buffer them until its internal FIFO is full (~56 bytes). This flag causes the Edgeport to poll the RX FIFO for received bytes. If any bytes are available they will be sent to the driver without any delay.

- **Remap Baud:**

Setting the baud rate to 1200 baud will result in 230400 baud.

- **Ignore Flush:**

If an application sends IRP_MJ_FLUSH_BUFFERS it will be ignored. The following is an excerpt from Microsoft documentation:

Drivers of devices with internal caches for data and drivers that maintain internal buffers for data must handle this request.

- **When Sent:**

Receipt of a flush request indicates that the driver should flush the device's cache or its internal buffer, or, possibly, should discard the data in its internal buffer.

- **Operation:**

The driver transfers any data currently cached in the device or held in the driver's internal buffer(s) before completing the flush request. The driver of an input-only device that buffers data internally might simply discard the currently buffered device data before completing the flush IRP, depending on the nature of its device.

- **Fast Writes:**

When an application sends a write to the driver, by default the Edgeport driver will wait until all data has been transmitted out of the Edgeport device before completing the write. When the Fast Writes flag is set, we complete the write even if data is still buffered in the driver and the Edgeport device.

- **Fast Reads:**

This flag is used when an application requires that a read complete immediately. In the read immediate case, the Edgeport driver will send a request to the Edgeport device asking for any buffered data to be sent up. This buffered data will be included when the read completes. If this flag is set, the driver will not query the Edgeport device for additional data.

- **Disable Plug & Play:**

Do not let the serial port enumerator detect devices plugged into the Edgeport.

- **Ignore Tx Purge:**

The IOCTL_SERIAL_PURGE request cancels the specified requests and deletes data from the specified buffers. The purge request can be used to cancel all read requests and write requests and to delete all data from the read buffer and the write buffer.

When the Ignore Tx Purge flag is set, the SERIAL_PURGE_TXCLEAR command will be ignored. The function will not purge the write buffer.

- **Timer Logic:** (Windows 9x only)

If the application uses PortSetReadCallback(), the notification routine will only be called when the number of bytes in the receive buffer is greater than the RX trigger. The Microsoft serial VxD also implements a timer that will trigger and call the notification routine if some amount of data is available in the RX buffer but no new data has been received for ~200ms (receiver is no longer active).

We do not enable this behavior by default because of the nature of Edgeport buffering. But if you set the flag we will complete the read when we detect ~200 ms no activity.

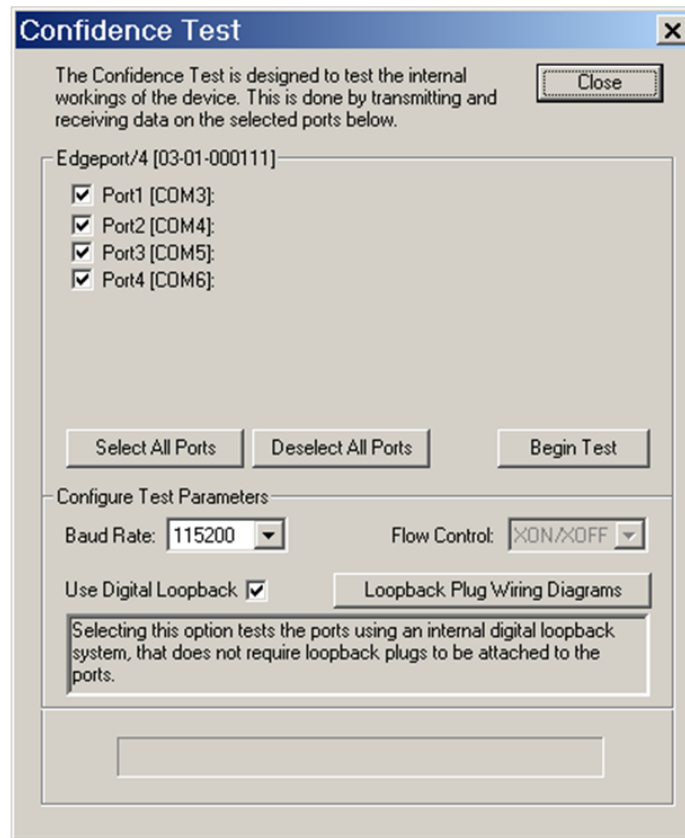
The code specifies that if the receiver is active, the read will not be completed.

The problem is that the Edgeport buffers the RX bytes and we poll the driver. If we do

not receive any bytes in 200ms we may report an erroneous event even if there are available bytes in the Edgeport device or driver.

Confidence Test tab

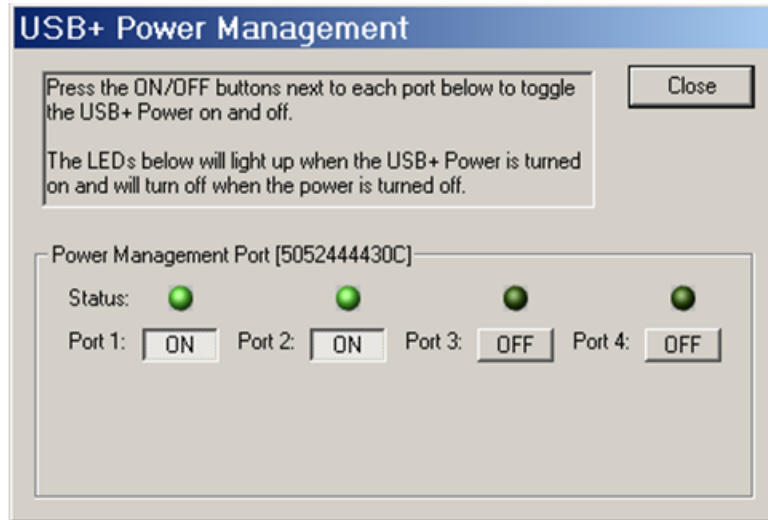
The **Confidence Test** tab allows you to perform a confidence test on the internal workings of the serial ports.



Power Management tab

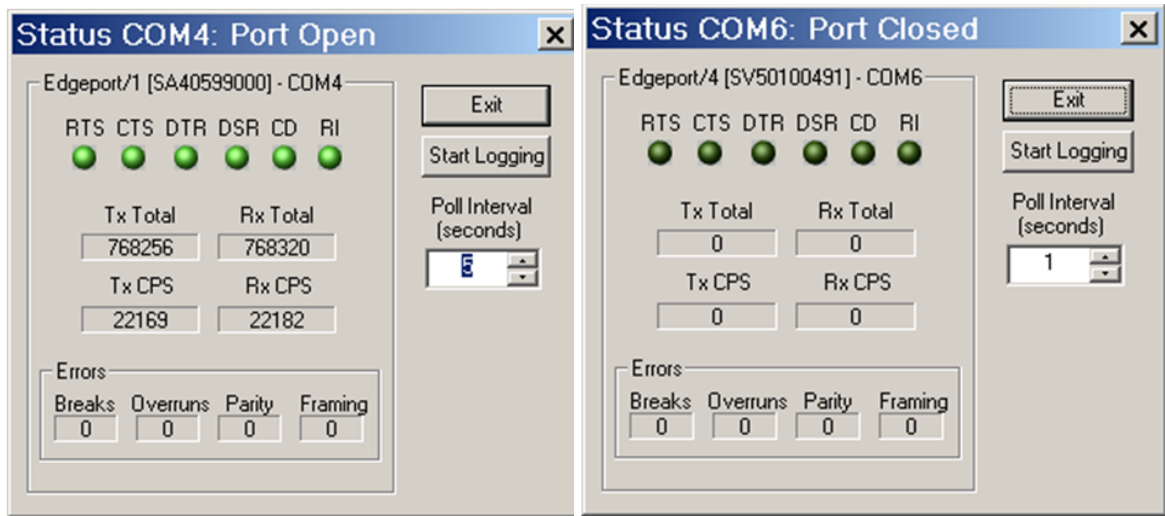
The **Power Management** tab allows you to turn the power on and off for select model Hubports with USB PlusPower ports.

Note This applies to Compact (/c) or PCI card PlusPower Hubport models. This feature does not toggle the 5 V standard USB port. It only applies to the 12 V and 24 V USB ports.



Port Status tab

The **Port Status** tab provides the status of a selected (highlighted) serial port.

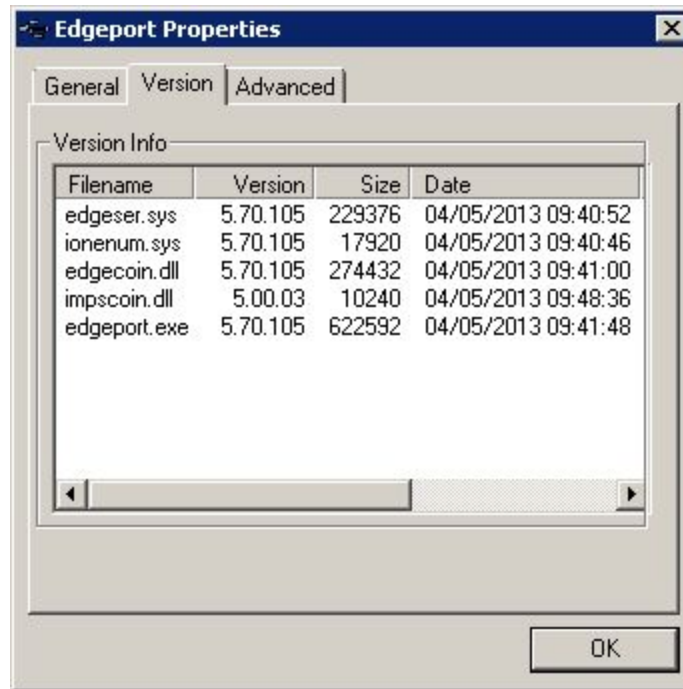


The Poll Interval is the number of seconds between updates of this window. This is also the number of seconds between each entry in the log file.

To create a log file, click the **Start Logging** button and enter a filename for the log file. This file will contain all of the information displayed in the **Port Status** window until the **Stop Logging** button is clicked.

Version tab

The **Version** tab allows you to review the file information pertaining to the software.



Advanced tab

The **Advanced** tab allows you to do several advanced tasks. See the subsections that follow for more detailed information.



- **Uninstall** - Uninstall the drivers.

Note You must reboot the computer after uninstalling drivers.

- **Enable Event Logging** – Place event messages in system event log.

- **COM Port Assignment** - Configure how COM ports will be assigned.
 - Assign COM ports based on converter serial number.

This is the default setting. In this mode, the driver uses the serial number of each converter to uniquely identify it, and the COM port assignments for a given converter are based on its serial number. No matter which physical USB port a converter is plugged into, it will maintain its assigned COM port numbers.
 - Assign COM ports based on physical USB port.

In this mode, the driver identifies a converter based on the physical USB port it is plugged into. This effectively assigns COM port numbers to physical USB ports. No matter which converter is plugged into a given USB port, it will use the COM port numbers assigned to that USB port. This permits a converter to be replaced with a new unit, and, although the new unit has a different serial number, it will receive the same COM port assignments as the old unit because they were both plugged into the same USB port.

When using this mode, converters are identified not by their serial number, but by a 2-7 digit number that identifies which USB port it is plugged into.

When the COM ports are assigned, click **OK**. You must reboot the computer before the change takes effect.

Edgeport system status light

For all Edgeports except the Edgeport/1i

The functionality of the system status light is as follows for current "TI-based" Edgeport products, with the exception of the Edgeport 1, which does not have LED indicators.

Off - No light indicates that the Edgeport driver is not properly installed.

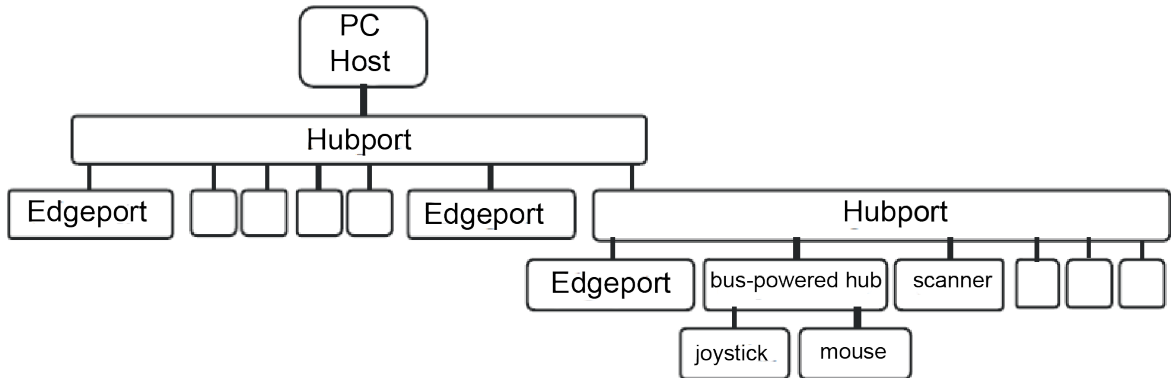
Red - This light may flash briefly during installation.

Orange - Blinking orange indicates Edgeport serial port activity. This light may also flash briefly during installation.

Green - Blinking green indicates that the Edgeport driver is properly installed and operating normally, and the unit is idle, ready for use.

Understanding hubs

Hubs, which are critical components in the USB architecture, are wiring concentrators that enable the attachment of multiple devices, thus converting a single attachment point into multiple attachment points. USB architecture allows a cascaded multiple hub configuration with certain power limitations (explained later in this section).



Each hub has an upstream port, connecting to the host, and multiple downstream ports, connecting to downstream devices, possibly including other hubs. A hub can detect attachment and detachment of downstream devices and enable and monitor the distribution of the power to downstream devices via their integral hardware and the operating system.

Each USB device reports its power requirements to the operating system, which then enables and disables the device as a function of its power requirements and the amount of available power. High powered devices typically need to be connected to a self-powered hub, such as the Hubport, which obtains power from its external power supply and provides up to 500 mA for each downstream port. A low-powered device, such as a mouse, can be connected to a bus-powered hub, which obtains power from its upstream host and provides up to 100 mA for each downstream port.

Due to the limited available power for bus-powered hubs, cascading two bus-powered hubs is an illegal topology, and devices connected to the second hub will not function. *USB specifications limit the connection of a bus-powered hub to a self-powered hub or host only.* Since Edgeport/421, Edgeport/42, Edgeport/42+, and Edgeport/416 operate as self-powered hubs, they are not affected by this limitation.

According to the USB Specification, the maximum limit of hubs cascaded in a series cannot exceed five. In other words, you may have a maximum of five hubs between any device and the host. This does NOT mean that the maximum number of hubs in a system is five. You can parallel-connect up to seven hubs *at any given level*. You must tally both external and embedded hubs when counting downstream hubs.

Regulatory information

Digi complies with all U.S. federal regulations for digital devices as well as the international regulations described below.

Regulatory statements

For U.S. Government use:

Computer software is furnished with Restricted Rights in accordance with FAR 52.227-14. Technical Data is furnished with Limited Rights in accordance with DFAR 252.227-7013 (b) (3) of the clause entitled RIGHTS IN TECHNICAL DATA – NONCOMMERCIAL ITEMS.”

For non-U.S. Government use:

These programs are supplied under a license. They may be used, disclosed, and/or copied only as supplied under such license agreement. Any copy must contain the above copyright notice and restricted rights notice. Use, copying, and/or disclosure of the programs is strictly prohibited unless otherwise provided for in the license agreement.

Radio Frequency Interface (RFI) (FCC 15.105)

This device has been tested and found to comply with the limits for Class B digital devices pursuant to Part 15 Subpart B, of the FCC rules. These limits are designed to provide reasonable protection against harmful interference in a residential environment. This equipment generates, uses, and can radiate radio frequency energy, and if not installed and used in accordance with the instruction manual, may cause harmful interference to radio communications. However, there is no guarantee that interference will not occur in a particular installation. If this equipment does cause harmful interference to radio or television reception, which can be determined by turning the equipment off and on, the user is encouraged to try and correct the interference by one or more of the following measures:

- Reorient or relocate the receiving antenna.
- Increase the separation between the equipment and receiver.
- Connect the equipment into an outlet on a circuit different from that to which the receiver is connected.
- Consult the dealer or an experienced radio/TV technician for help.

Labeling Requirements (FCC 15.19)

This device complies with Part 15 of FCC rules. Operation is subject to the following two conditions: (1) this device may not cause harmful interference, and (2) this device must accept any interference received, including interference that may cause undesired operation.

If the FCC ID is not visible when installed inside another device, then the outside of the device into which the module is installed must also display a label referring to the enclosed module FCC ID.

Modifications (FCC 15.21)

Changes or modifications to this equipment not expressly approved by Digi may void the user’s authority to operate this equipment.



WARNING! The connection of a non-shielded interface cable to this equipment will invalidate the FCC Certification for this device.

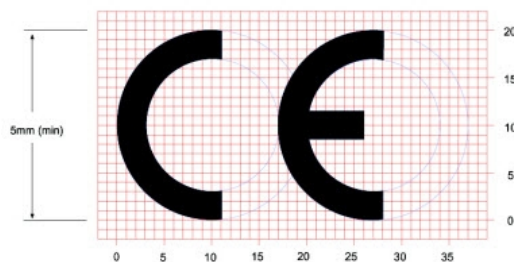
Industry Canada

This digital apparatus does not exceed the Class B limits for radio noise emissions from digital apparatus set out in the Radio Interference Regulations of the Canadian Department of Communications.

Le present appareil numerique n'emet pas de bruits radioelectriques depassant les limites applicables aux appareils numeriques de la class B prescrites dans le Reglement sur le brouillage radioelectrique edicte par le ministere des Communications du Canada.

Europe

For OEM labeling, the "CE" mark must be affixed to a visible location on the OEM product. The following figure shows CE labeling requirements.



The CE mark shall consist of the initials "CE" taking the following form:

- If the CE marking is reduced or enlarged, the proportions given in the above graduated drawing must be respected.
- The CE marking must have a height of at least 5 mm except where this is not possible on account of the nature of the apparatus.
- The CE marking must be affixed visibly, legibly, and indelibly.

Conforms to the relevant EU Directives listed here:

EMC Directive 2004/108/EC|

Low Voltage Directive 2006/95/EC

Radio Equipment Directive

If the Edgeport® USB is incorporated into a product, the manufacturer must ensure compliance of the final product with articles 3.1a and 3.1b of the RE Directive (Radio Equipment Directive).

Declaration of Conformity (DoC)

Digi has issued Declarations of Conformity for the Digi Edgeport products concerning emissions, EMC, and safety.

China RoHS statement

The Table of Toxic and Hazardous Substances/Elements and their Content shall apply to any product covered by this manual and labeled with the following symbol:



The Table of Toxic and Hazardous Substances/Elements and their Content as required by China's Management Methods for the Control of Pollution from Electronic Information Products						
Part Name (部件名称)	Toxic and Hazardous Substances or Elements (有毒有害物质或元素)					
	Lead (Pb) (铅)	Mercury (Hg) (汞)	Cadmium (Cd) (镉)	Hexavalent Chromium (Cr (VI)) (六价铬)	Polybrominated biphenyls (PBB) (多溴联苯)	Polybrominated diphenyl ethers (PBDE) (多溴二苯醚)
301-1002-08	X	O	O	O	O	O
<p>O: Indicates that this toxic or hazardous substance contained in all of the homogeneous materials for this part is below the limit requirement in SJ/T 11363-2006. <small>表示该有毒有害物质在该部件所有均质材料中的含量均在SJ/T11363-2006标准规定的限量要求以下。</small></p> <p>X: Indicates that this toxic or hazardous substance contained in at least one of the homogeneous materials used for this part is above the limit requirement in SJ/T 11363-2006. <small>示该有毒有害物质至少在该部件的某一均质材料中的含量超出SJ/T11363-2006标准规定的限量要求。</small></p>						